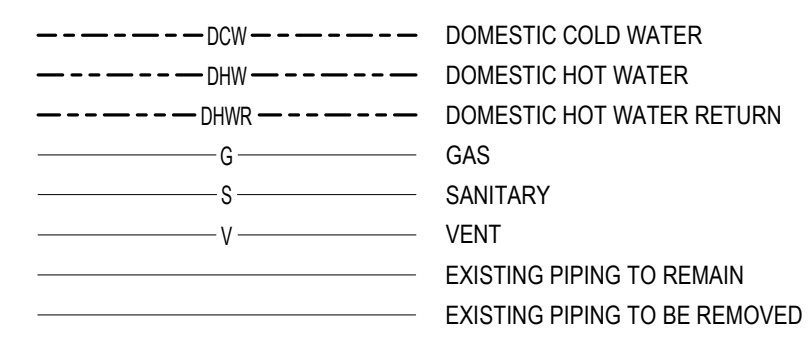


**SYMBOLS & ABBREVIATIONS**

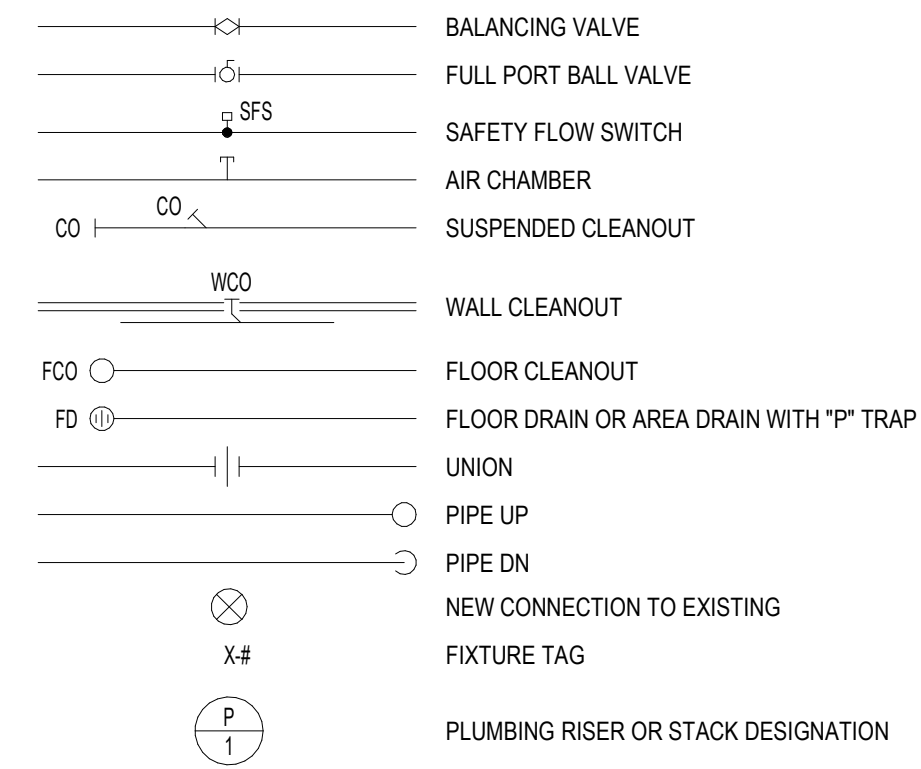
**ABBREVIATIONS**

AFF	ABOVE FINISHED FLOOR	HR	HOSE REEL
AP	ACCESS PANEL	HW	HOT WATER
BC	BALANCING COCK OR VALVE	HWR	HOT WATER RETURN
BFP	BACK FLOW PREVENTER	IE	INVERT ELEVATION
BOP	BOTTOM OF PIPE	NC	NORMALLY CLOSED
BV	BALL VALVE	NIC	NOT IN CONTRACT
CD	CONDENSATE DRAIN	NO	NORMALLY OPEN
CI	CAST IRON	NS	NOT SPRINKLERED
CLG	CEILING	NTS	NOT TO SCALE
CO	CLEAN OUT	OSD	OPEN SITE DRAIN
CV	CHECK VALVE	PG	PRESSURE GAUGE
CW	COLD WATER	PRV	PRESSURE REDUCING VALVE
DCW	DOMESTIC COLD WATER	RD	ROOF DRAIN
DHW	DOMESTIC HOT WATER	S	SOIL-SANITARY
DHWR	DOMESTIC HOT WATER RETURN	SK	SINK
DIA	DIAMETER	SS	SERVICE SINK
DWG	DRAWING	ST	STORM
E	EXISTING	TH	THERMOMETER
EL	ELEVATION	TMV	THERMOSTATIC MIXING VALVE
ES	EMERGENCY EYE WASH SHOWER	T&PRV	TEMPERATURE & PRESSURE RELIEF VALVE
ETR	EXISTING TO REMAIN	TW	TEMPERED WATER
EIW	EYE WASH	TYP	TYPICAL
FD	FLOOR DRAIN	VB	VACUUM BREAKER
FL	FLOOR	V	VENT
GPM	GALLONS PER MINUTE	VTR	VENT THRU ROOF
GV	GATE VALVE	W	WASTE
HB	HOSE BIB	WC	WATER CLOSET
HD	HUB DRAIN		

**SUSPENDED PIPING**



**SYMBOLS**



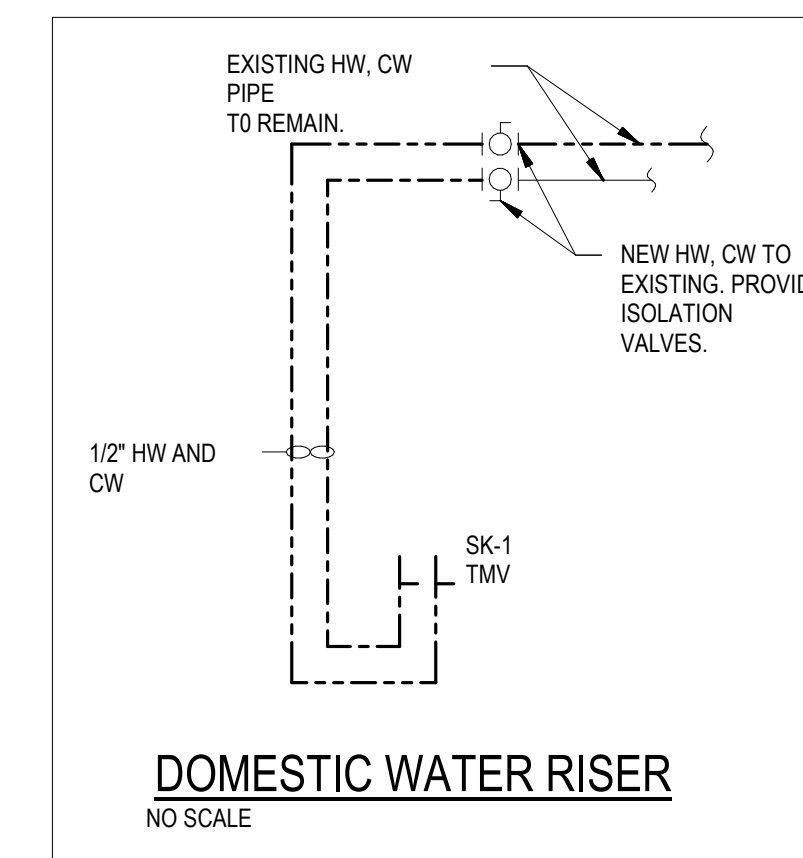
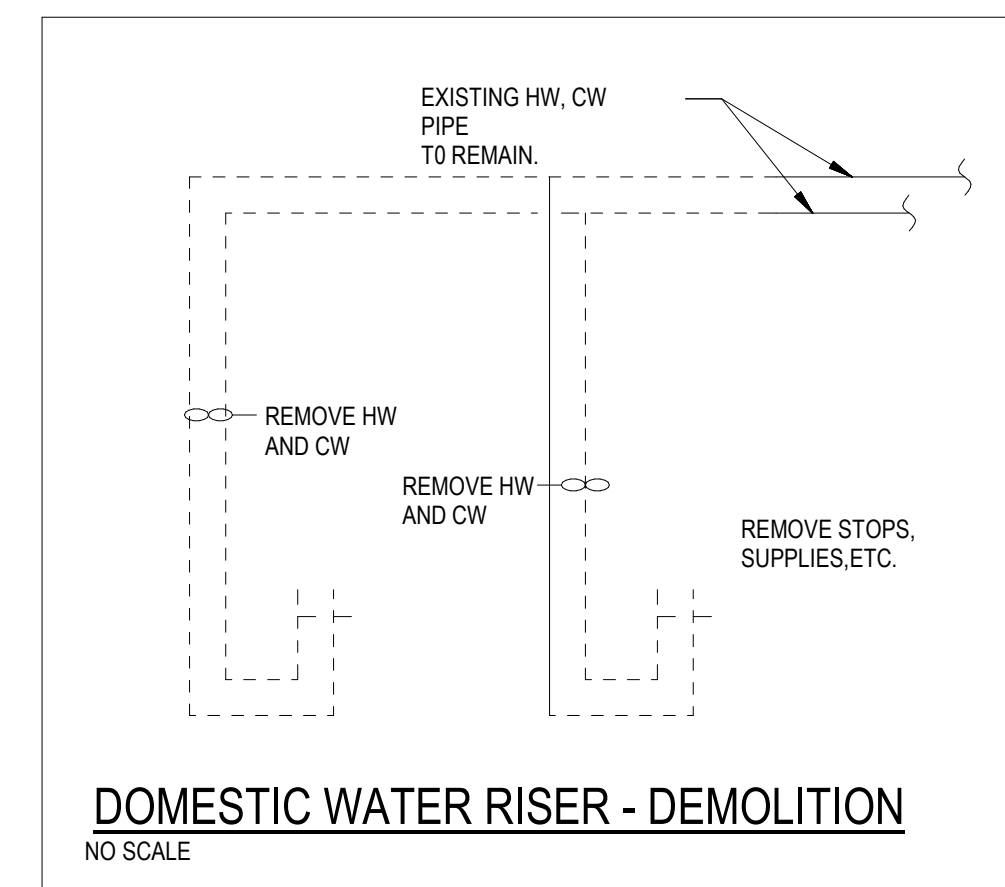
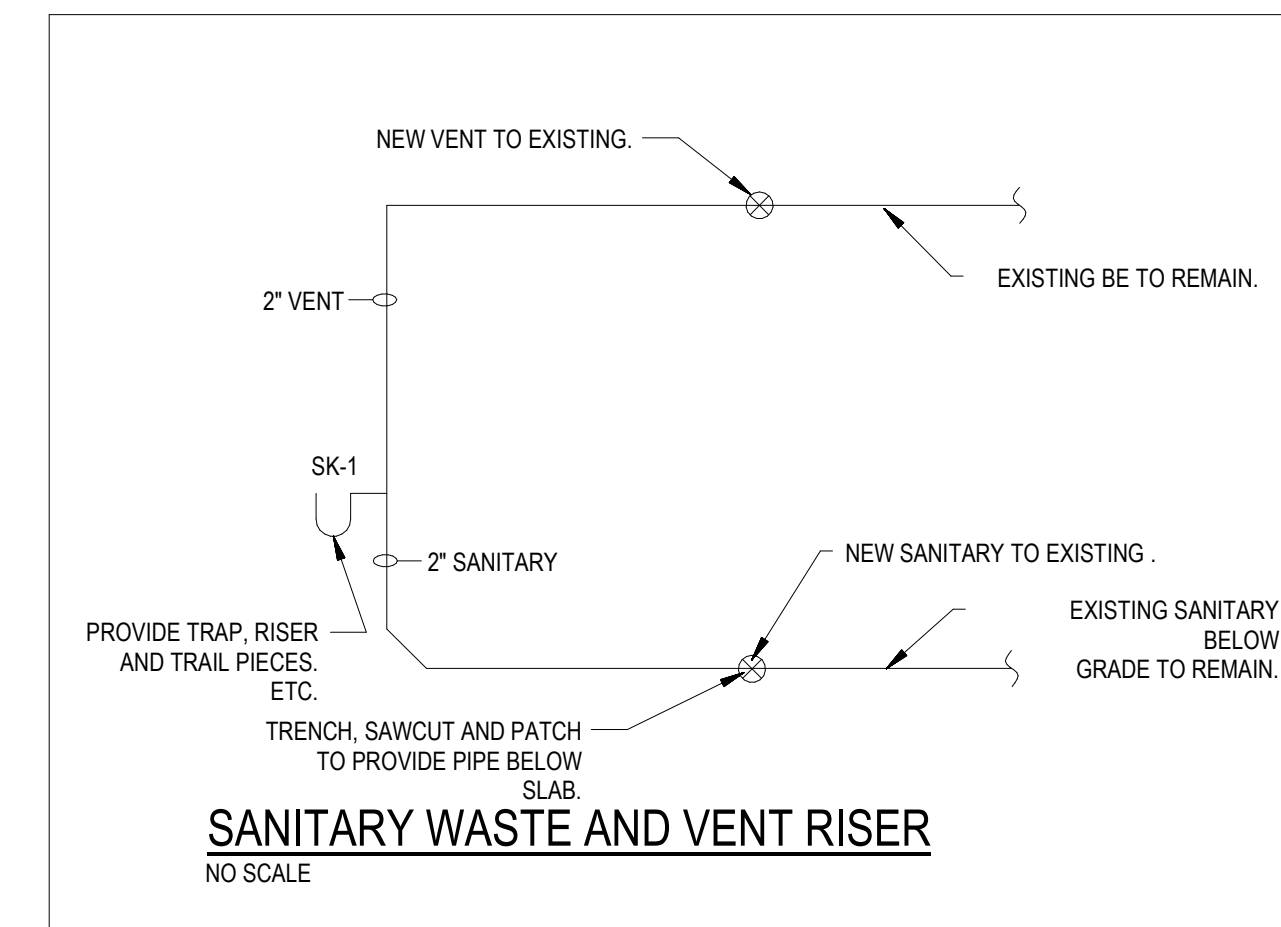
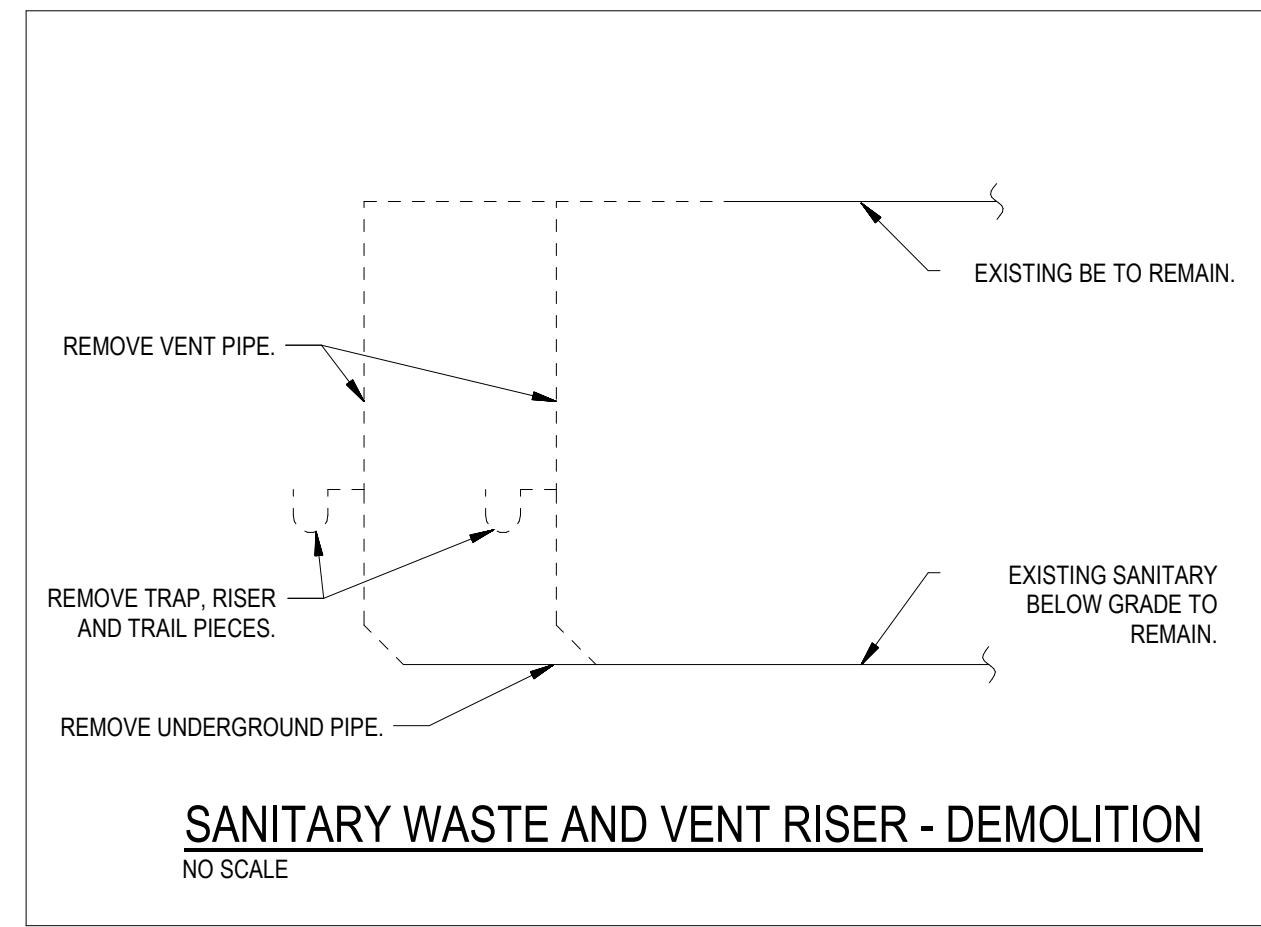
**PLUMBING FIXTURE SCHEDULE**

FIXTURE TAGS	DESCRIPTION
SK-1	ELKAY ELUHAD361485 DOUBLE BOWL SINK CONSTRUCTED OF 18 GAGE STAINLESS STEEL, ADA COMPLIANT, OFFSET DRAIN, SOUND PADS, ZERO RADIUS CORNERS. PROVIDE GROHE ZEDRA SINGLE HANDLE PULL DOWN KITCHEN FAUCET WITH DUAL SPRAY, 1.75 GPM, 1.5 GPM, ADA COMPLIANT. STOPS: MCGUIRE LFH2165LKN3; BASKET STRAINERS; P-TRAP WITH CLEANOUT; MCGUIRE 8872CB; THERMOSTATIC MIXING VALVE: POWERS LFLM945, ASSE 1070 RATED. COORDINATE CUTOUTS FOR FAUCET AND SINK WITH MILLWORK.
TMV	THERMOSTATIC MIXING VALVE: POWERS LFLM945, ASSE 1070 RATED.

**FIXTURE CONNECTIONS**

HOT	COLD	SANITARY	VENT
.5"	.5"	1.25"	1.25"
0.5	0.5	-	-

NOTE: COORDINATE THE INSTALLATION OF THE FIXTURES WITH THE MILLWORK, PROVIDE ADEQUATE SUPPORT FOR ALL FIXTURES



**bailey edward**

T 312.440.2300  
F 312.440.2303  
WWW.BAILEYEDWARD.COM

35 EAST WACKER DR  
SUITE 2800  
CHICAGO, IL  
60601-2308

©2022 BAILEY EDWARD DESIGN  
DESIGN FIRM LICENSE NO. 184-001962

MEP ENGINEER  
**BAILEY EDWARD DESIGN**  
104 NORTHWEST HIGHWAY  
FOX RIVER GROVE, IL 60021  
847.516.0992

DATE	DRAWING SET TITLE
12.28.2022	BREAK/BOARD AREA 100% DESIGN
02.14.2023	BID QUESTIONS

**SURS OFFICE BUILDOUT**

1901 FOX DR  
CHAMPAIGN, IL 61820

PLUMBING STANDARDS

Expiration Date of Seal: 11-30-2023	BE Project No. 21236
Drawn By: JPB	
Drawing No. P000-C	